

# METALMASTER

## CNC Hydraulic Pressbrake



# SPB - Series

**MACHINERYHOUSE**

[www.machineryhouse.com.au](http://www.machineryhouse.com.au)

[www.machineryhouse.co.nz](http://www.machineryhouse.co.nz)

SYDNEY

MELBOURNE

BRISBANE

PERTH

(02) 9890 9111

(03) 9212 4422

(07) 3215 2200

(08) 9373 9999

CHRISTCHURCH

AUCKLAND

(03) 7416 241

(09) 2717 234

The Metalmaster Synchro series pressbrakes adopt a heavy duty integral welded steel structure that is furnace tempered post welding to relieve residual stresses and ensure accuracy & longevity of the machine.

The hydraulic cylinders are manufactured from high resistance steel incorporating chromium plated ground & lapped pistons to ensure longevity of the Swedish brand SKF hydraulic seals

The hydraulics system consists of electronically controlled proportional valves with independent 3 point closed loop safety monitoring of the two cylinders as well as the main hydraulic system.

Italian manufactured DSP Laser Guarding ensures operator safety whilst in operation. The Laser system is designed to cater for many different types and sizes of top tooling ensuring safety at the appropriate points as required by the AUS/NZ standards.

At the heart of the electrical system is the Italian made MCS safety control module which controls & monitors all pressbrake functionality, the MCS provides dual monitoring & closed loop feedback for all critical safety functions such as Hydraulic valves, Emergency stop circuits, doors, guards, foot pedal, DSP lasers to name a few functions. This ensures the machinery to be Compliant with AS/NZS 4024.1 – 2019 Safety of Machinery Series



## Features

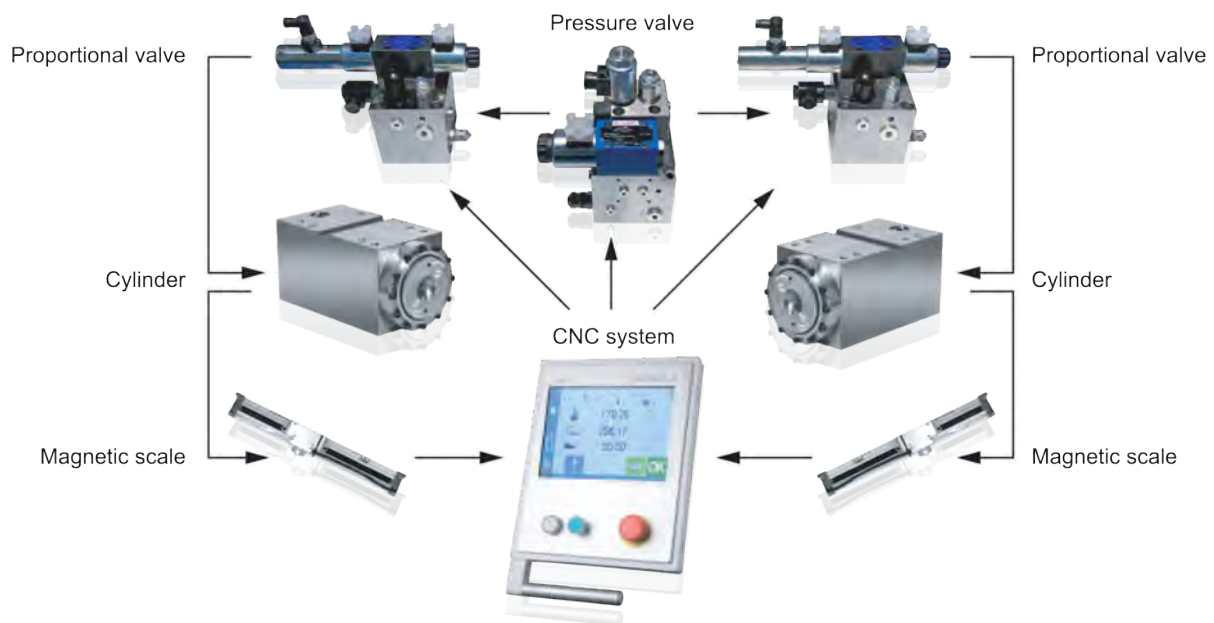
- 5 CNC Controlled Axis (Y1, Y2, X, R, V) as standard.
- Y1 & Y2 Axis is controlled by advanced safety monitored hydraulic proportional valves ensuring accuracy in movement.
- Bending compensation & accuracy is maintained using GIVI (Italy) Linear scales mounted on either end of the machine bed to measure any frame deflection
- CNC controlled auto crowning table (V) adjusts accordingly based on material, length & thickness specified in program.
- Servo driven X & R Axis provides fast response & accuracy when positioning the backgauge.
- Flip up type back gauge fingers mounted on linear rails complete with micro adjusters are provided as standard
- Advanced push button quick release tooling top clamps allow for the top tooling to be removed from the front of the clamp rather than sliding all of the tooling left & or right, this saves time and ensures you are not shifting all your tooling just to change 1 piece.



## CNC X-axis and R-axis

The X-axis linear guides, ball screws and servo motors ensure accurate and fast positioning of the X-axis. The R-axis adopts a spur gear guide rail, high-power servo motor and reducer to provide fast response times and precise positioning. Flip up type back gauge fingers are provided with multi steps and micro adjustment.





The advanced Hydraulic system containing safety monitored proportional valves is integrated into the CNC control. Receiving real time feedback from the Y axis linear scales to the controller can compensate for deflection during bending, providing repeatable & precise control of the machine tool.



Advanced push button quick release tooling (front load)



Flip up type back gauge micro adjustment fingers



Premium front sheet supports Fully adjustable on the linear rails



Bending compensation linear scales. Made in Italy

## 5 models available

METALMASTER MODEL	SPB-1640	SPB-2563	SPB-32125	SPB-32160	SPB-40200
Stock Code	S9710	S9712	S9714	S9716	S9719
Machine Axis	5	5	5	5	5
Nominal Pressure - Tonnage	40	63	125	160	200
Nominal Pressure - Kilonewtons	400	630	1250	1600	2000
Length of Work Table	1600	2500	3200	3200	4000
Height of work table	800	850	900	900	900
Distance Between Columns	1200	1980	2655	2655	3355
Throat Depth	250	300	350	350	350
Yaw Compensation	GIVI Scales	GIVI Scales	GIVI Scales	GIVI Scales	GIVI Scales
Maximum Open Height	370	400	455	475	475
Ram Stroke	150	150	200	200	200
Approach Speed mm/sec	180	180	180	180	140
Return speed mm/sec	150	150	160	160	110
X Axis Stroke (Back gauge)	600	600	600	600	600
X Axis Servo power - kW	0.85	0.85	0.85	0.85	0.85
R Axis Stroke	150	150	150	150	150
R Axis Servo motor power - kW	0.85	0.85	0.85	0.85	0.85
Z Axis Fingers	Linear Guide	Linear Guide	Linear Guide	Linear Guide	Linear Guide
Table Bed Crowning System	CNC V Axis	CNC V Axis	CNC V Axis	CNC V Axis	CNC V Axis
Motor Power	4	5.5	11	11	15
Nett Weight	2700	4000	7100	8500	10300

## CYBELEC CybTouch CNC Controller

The CybTouch 12 is specifically developed for synchronised press brakes, Headquartered in Switzerland Cybelec is at the forefront of pressbrake controller technology.

The control features an intuitive interface with an advanced array of bending functions with vivid colour & large touch key interactive touch software. Interactive On-line help, and many other automatic functions that constantly guide the operator. CybTouch controllers are very easy to operate.

- Large, vivid and high-contrast fully touchscreen control mounted on a swivel pendant for optimal ergonomics
- Simple pages, clear display, large keys
- Intuitive 2D graphical touch draw part profile programming with auto bend sequencing
- Bend material allowance calculation
- Radius bump bending calculation function
- Angle, pressure and crowning calculation & management
- Bending angle and back gauge correction
- Various automatic calculations of other bend functions
- Complete programming for efficient mass production with multiple bends
- Bending sequences and programs can be saved for future use
- Easy single bends with EasyBend page
- Easy manual movement
- On-line help and interactive warning pop-ups



- Touch Draw profile programming
- Automatic Bending Sequence
- 2D Interference Simulation

Supplied as standard on this Series Syncro machines. The controller decides the bending sequence to best avoid collision with tooling or back gauge. Operator assistance for bending order and part placement is provided graphically whilst running the program.

# easy operation & powerful features